



NATA LIGHTING CO.,LTD.
www.nata.cn
Email:info@nata.com
Tel:+86-750-3770000 Fax:+86-750-3771111
Address:380JinOu Road,GaoXin Zone,Jiang Men City,Guangdong,China

NT

Client:

LumCAT: 2-2646-L

Luminaire: 92.70.411.00

Report No: 20231027-B010

Ballast type: AC

Test No: 20231027-C010

Voltage(V): 34.590

LampCAT: Fortimo_SLM_C_1208

Current(A): 0.600

Lamp flux(lm): 3391.2

Power (W): 20.754

Number of Lamps: 1

PF: 0.000

Length(mm): 0

Width(mm): 0

Phm Type: C

Height(mm): 0

Photometric Results

Lumens(lm): 3075.23, Efficiency(%): 90.68% , Luminous Efficacy(lm/W): 148.18

Central intensity(cd): 5323.079, Maximum intensity(cd): 5323.079

Angle of maximum intensity: C=0.0 γ =0.0

Beam Angle(50%Imax): [C0/180]Total=46.6

[C90/270]Total=46.6

Field angle(10%Imax): [C0/180]Total=68.2

[C90/270]Total=68.2

Maximum s/h(1/2): C0_180=0.74 C90_270=0.74

Maximum s/h(1/4): C0_180=0.72 C90_270=0.72

Up flux rate of lamp(%): 0.00%

Down flux rate of lamp(%): 90.68%

Up flux rate of LUM(%): - -

Down flux rate of LUM(%): 100.00%

CIE Type : Direct lighting

Output flux ratio in π solid angle : 98.030%

Equipment: GMS1980
Temperature(°C): 0.0

Date: 2023/10/27
Humidity(%): 0.0%

Operator: NT07
Distance(m): 7.44

$\gamma(^{\circ})$	Average I(cd)	Zonal F(lm)	Sum F(lm)	Eff Flux(%)	Eff Sum(%)
0.0	5323.079	0.000	0	0.00%	0.00%
1.0	5311.939	5.089	5.089	0.15%	0.17%
2.0	5276.374	15.197	20.286	0.45%	0.66%
3.0	5225.380	25.117	45.403	0.74%	1.48%
4.0	5166.636	34.785	80.188	1.03%	2.61%
5.0	5081.322	44.086	124.274	1.30%	4.04%
6.0	4995.040	52.954	177.228	1.56%	5.76%
7.0	4907.373	61.464	238.692	1.81%	7.76%
8.0	4815.486	69.585	308.277	2.05%	10.02%
9.0	4728.305	77.347	385.624	2.28%	12.54%
10.0	4625.485	84.648	470.273	2.50%	15.29%
11.0	4530.900	91.491	561.764	2.70%	18.27%
12.0	4425.659	97.908	659.672	2.89%	21.45%
13.0	4318.134	103.767	763.439	3.06%	24.83%
14.0	4198.917	109.018	872.456	3.21%	28.37%
15.0	4081.567	113.678	986.134	3.35%	32.07%
16.0	3948.303	117.660	1103.794	3.47%	35.89%
17.0	3803.969	120.724	1224.518	3.56%	39.82%
18.0	3652.023	122.933	1347.451	3.63%	43.82%
19.0	3481.603	124.110	1471.562	3.66%	47.85%
20.0	3307.308	124.256	1595.818	3.66%	51.89%
21.0	3117.446	123.368	1719.186	3.64%	55.90%
22.0	2932.149	121.569	1840.755	3.58%	59.86%
23.0	2734.191	118.895	1959.65	3.51%	63.72%
24.0	2503.851	114.522	2074.172	3.38%	67.45%
25.0	2305.131	109.346	2183.518	3.22%	71.00%
26.0	2075.345	103.402	2286.92	3.05%	74.37%
27.0	1852.477	96.095	2383.015	2.83%	77.49%
28.0	1558.716	86.364	2469.379	2.55%	80.30%
29.0	1353.361	76.188	2545.567	2.25%	82.78%
30.0	1154.233	67.705	2613.272	2.00%	84.98%
31.0	997.230	59.872	2673.144	1.77%	86.92%
32.0	827.626	52.280	2725.424	1.54%	88.62%
33.0	675.660	44.287	2769.711	1.31%	90.07%
34.0	545.703	36.962	2806.673	1.09%	91.27%
35.0	436.332	30.498	2837.172	0.90%	92.26%
36.0	353.391	25.145	2862.316	0.74%	93.08%
37.0	286.822	20.880	2883.197	0.62%	93.76%

$\gamma(^{\circ})$	Average I(cd)	Zonal F(lm)	Sum F(lm)	Eff Flux(%)	Eff Sum(%)
38.0	241.937	17.649	2900.846	0.52%	94.33%
39.0	190.029	14.744	2915.59	0.43%	94.81%
40.0	150.832	11.888	2927.478	0.35%	95.20%
41.0	113.655	9.418	2936.896	0.28%	95.50%
42.0	96.654	7.641	2944.537	0.23%	95.75%
43.0	82.982	6.654	2951.191	0.20%	95.97%
44.0	73.122	5.892	2957.083	0.17%	96.16%
45.0	65.407	5.324	2962.407	0.16%	96.33%
46.0	59.387	4.880	2967.288	0.14%	96.49%
47.0	54.523	4.531	2971.818	0.13%	96.64%
48.0	50.282	4.237	2976.055	0.12%	96.77%
49.0	46.919	3.992	2980.046	0.12%	96.90%
50.0	43.729	3.779	2983.826	0.11%	97.03%
51.0	41.197	3.593	2987.419	0.11%	97.14%
52.0	39.024	3.442	2990.861	0.10%	97.26%
53.0	37.018	3.308	2994.169	0.10%	97.36%
54.0	35.364	3.190	2997.359	0.09%	97.47%
55.0	33.759	3.086	3000.445	0.09%	97.57%
56.0	32.437	2.991	3003.436	0.09%	97.67%
57.0	31.185	2.909	3006.345	0.09%	97.76%
58.0	30.119	2.835	3009.18	0.08%	97.85%
59.0	29.151	2.771	3011.951	0.08%	97.94%
60.0	28.216	2.710	3014.661	0.08%	98.03%
61.0	27.421	2.655	3017.316	0.08%	98.12%
62.0	26.660	2.606	3019.922	0.08%	98.20%
63.0	25.968	2.560	3022.482	0.08%	98.28%
64.0	25.276	2.515	3024.996	0.07%	98.37%
65.0	24.674	2.472	3027.468	0.07%	98.45%
66.0	24.072	2.432	3029.9	0.07%	98.53%
67.0	23.449	2.389	3032.29	0.07%	98.60%
68.0	22.896	2.348	3034.638	0.07%	98.68%
69.0	22.321	2.307	3036.944	0.07%	98.75%
70.0	21.795	2.266	3039.21	0.07%	98.83%
71.0	21.235	2.224	3041.434	0.07%	98.90%
72.0	20.709	2.181	3043.615	0.06%	98.97%
73.0	20.169	2.138	3045.753	0.06%	99.04%
74.0	19.623	2.092	3047.845	0.06%	99.11%
75.0	19.125	2.047	3049.892	0.06%	99.18%

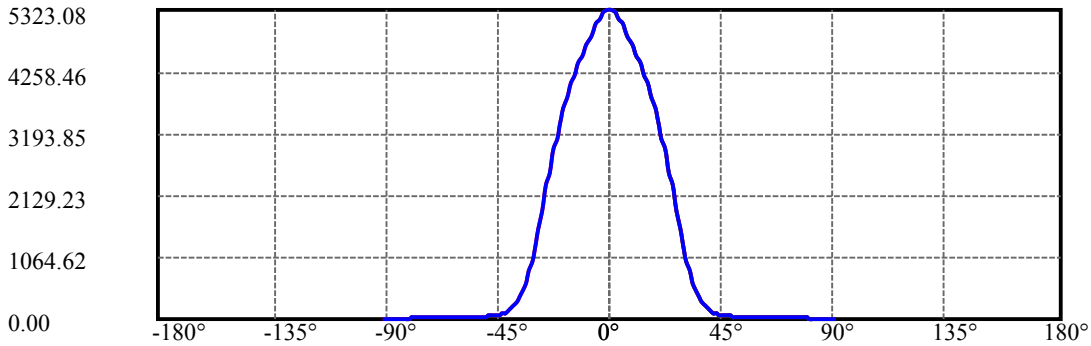
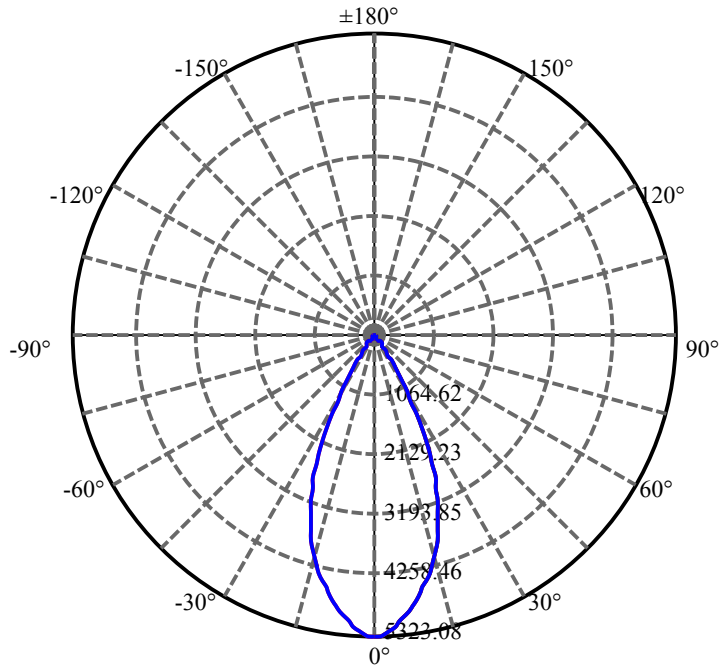
$\gamma(^{\circ})$	Average I(cd)	Zonal F(lm)	Sum F(lm)	Eff Flux(%)	Eff Sum(%)
76.0	18.592	2.002	3051.894	0.06%	99.24%
77.0	18.066	1.954	3053.849	0.06%	99.30%
78.0	17.554	1.907	3055.755	0.06%	99.37%
79.0	17.049	1.859	3057.615	0.05%	99.43%
80.0	16.530	1.810	3059.425	0.05%	99.49%
81.0	16.101	1.765	3061.189	0.05%	99.54%
82.0	15.624	1.720	3062.91	0.05%	99.60%
83.0	15.195	1.675	3064.585	0.05%	99.65%
84.0	14.786	1.633	3066.218	0.05%	99.71%
85.0	14.392	1.592	3067.811	0.05%	99.76%
86.0	14.011	1.553	3069.363	0.05%	99.81%
87.0	13.679	1.515	3070.879	0.04%	99.86%
88.0	13.326	1.479	3072.358	0.04%	99.91%
89.0	13.091	1.448	3073.806	0.04%	99.95%
90.0	12.967	1.429	3075.235	0.04%	100.00%

ZONAL LUMEN SUMMARY

Zone	Lumens	%Lamp	%Fixt
0-30	2613.27	77.06%	84.98%
0-40	2927.48	86.32%	95.20%
0-60	3014.66	88.90%	98.03%
0-90	3073.81	90.64%	99.95%
0-120	3073.81	90.64%	99.95%
0-180	3075.23	90.68%	100.00%
60-90	59.15	1.74%	1.92%
90-120	0.00	0.00%	0.00%
90-130	0.00	0.00%	0.00%
90-150	0.00	0.00%	0.00%
90-180	0.00	0.00%	0.00%
0-27.89	2460.19	72.55%	80.00%

ZONAL LUMEN SUMMARY

0-10	470.27
10-20	1125.54
20-30	1017.45
30-40	314.21
40-50	56.35
50-60	30.84
60-70	24.55
70-80	20.21
80-90	14.38
90-100	0.00
100-110	0.00
110-120	0.00
120-130	0.00
130-140	0.00
140-150	0.00
150-160	0.00
160-170	0.00
170-180	0.00



C0(Max): —————

C0/C180: —————

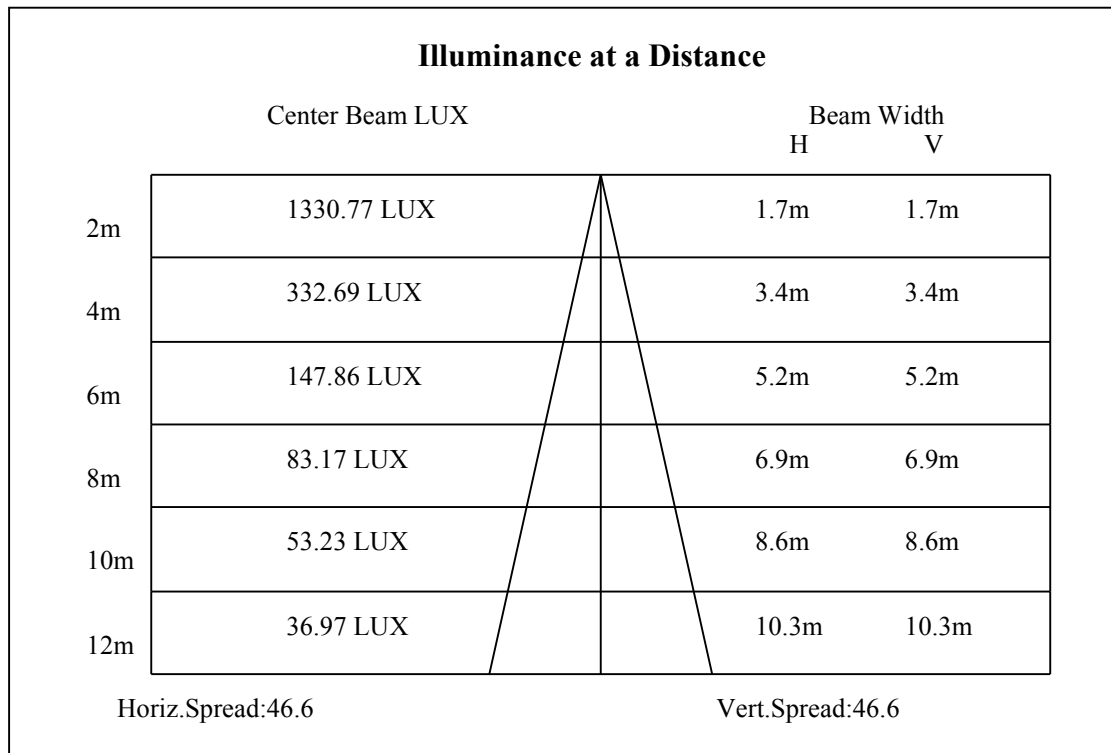
C90/C270: —————

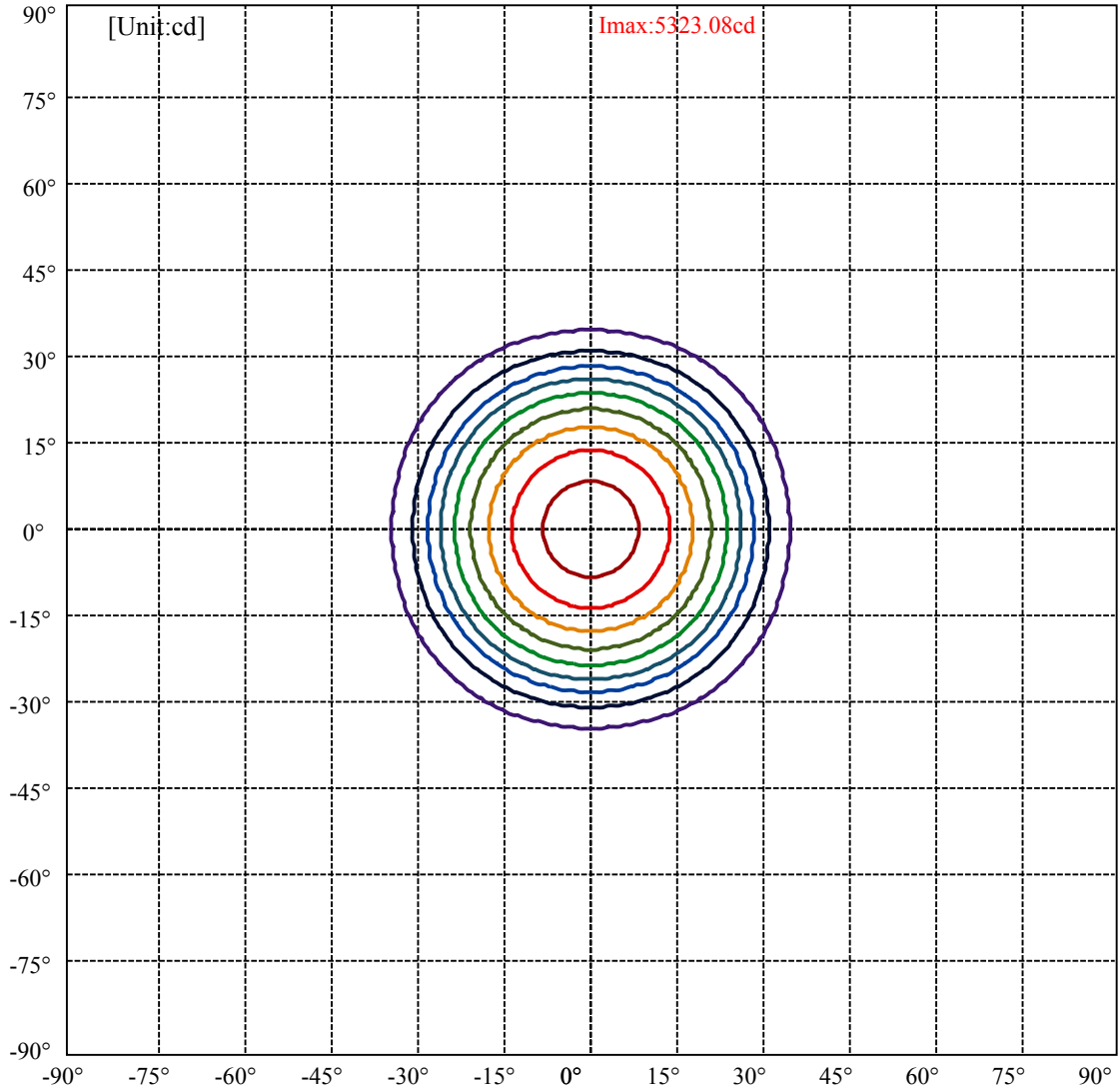
Field angle(10%Imax):C0/180Left:34.1 Right:34.1

:C90/270Left:34.1 Right:34.1

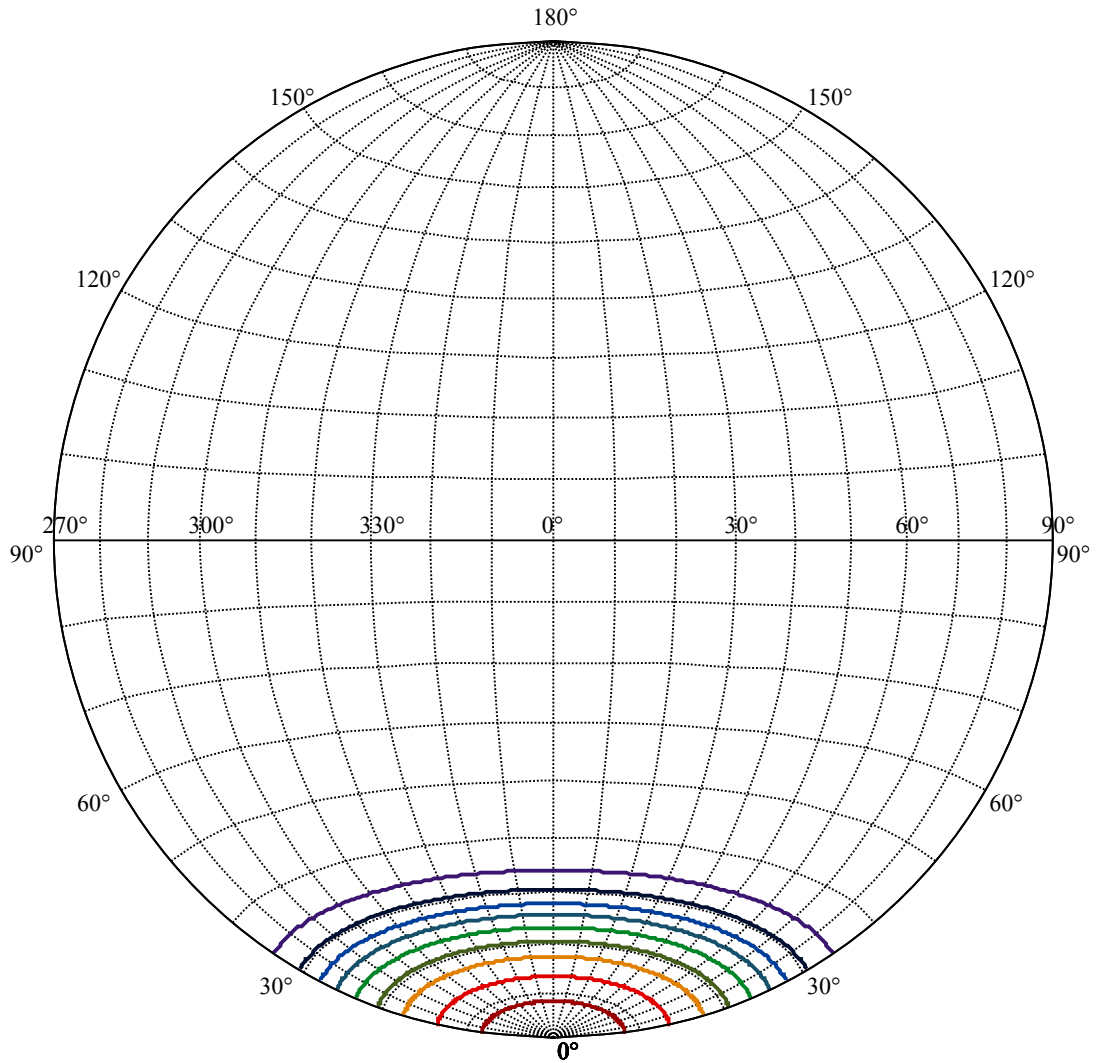
Beam Angle(50%Imax):C0/180Left:23.3 Right:23.3

:C90/270Left:23.3 Right:23.3





(10%Imax) 532.308	—
(20%Imax) 1064.62	—
(30%Imax) 1596.92	—
(40%Imax) 2129.23	—
(50%Imax) 2661.54	—
(60%Imax) 3193.85	—
(70%Imax) 3726.16	—
(80%Imax) 4258.46	—
(90%Imax) 4790.77	—



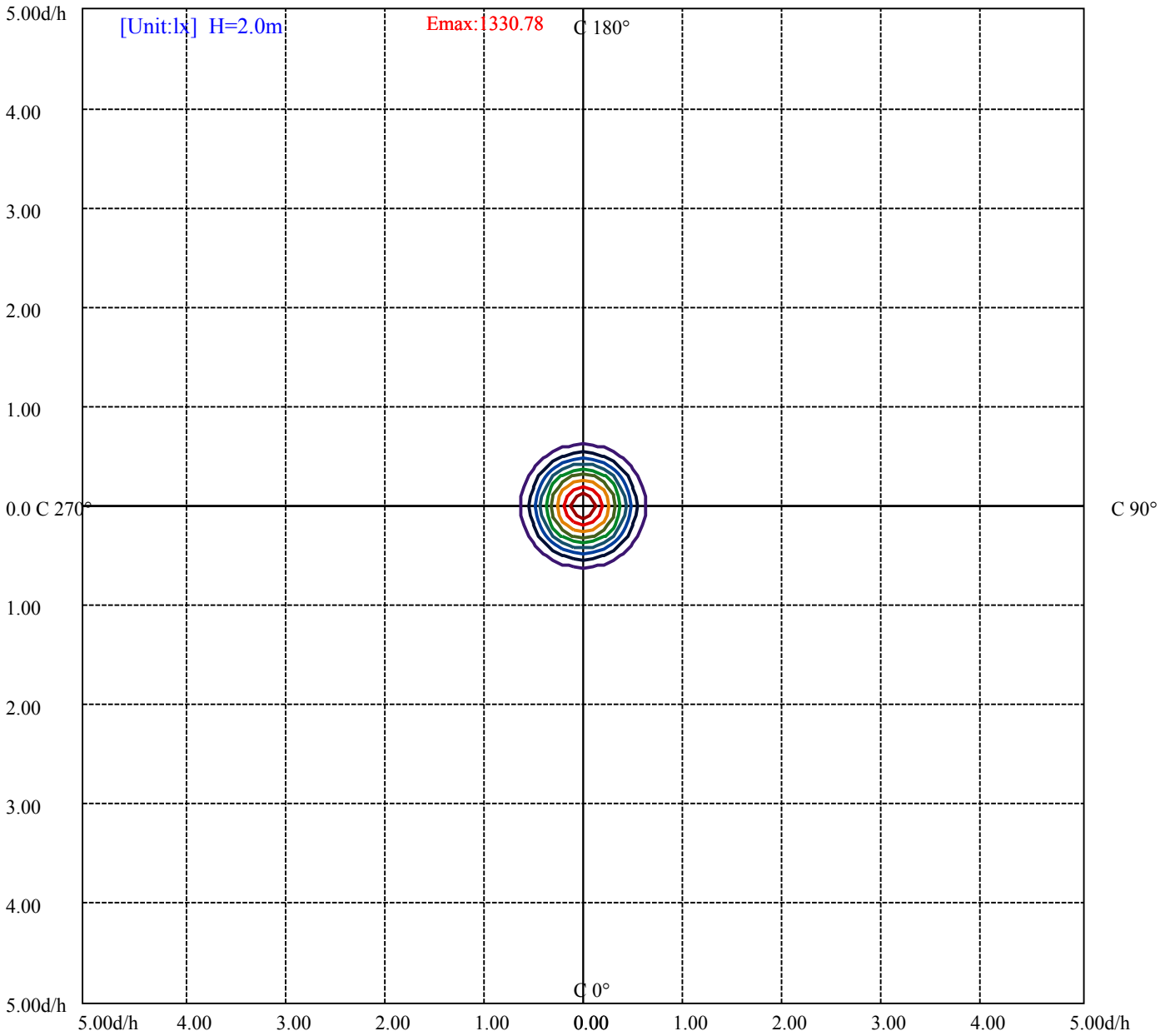
House

[Unit:cd]

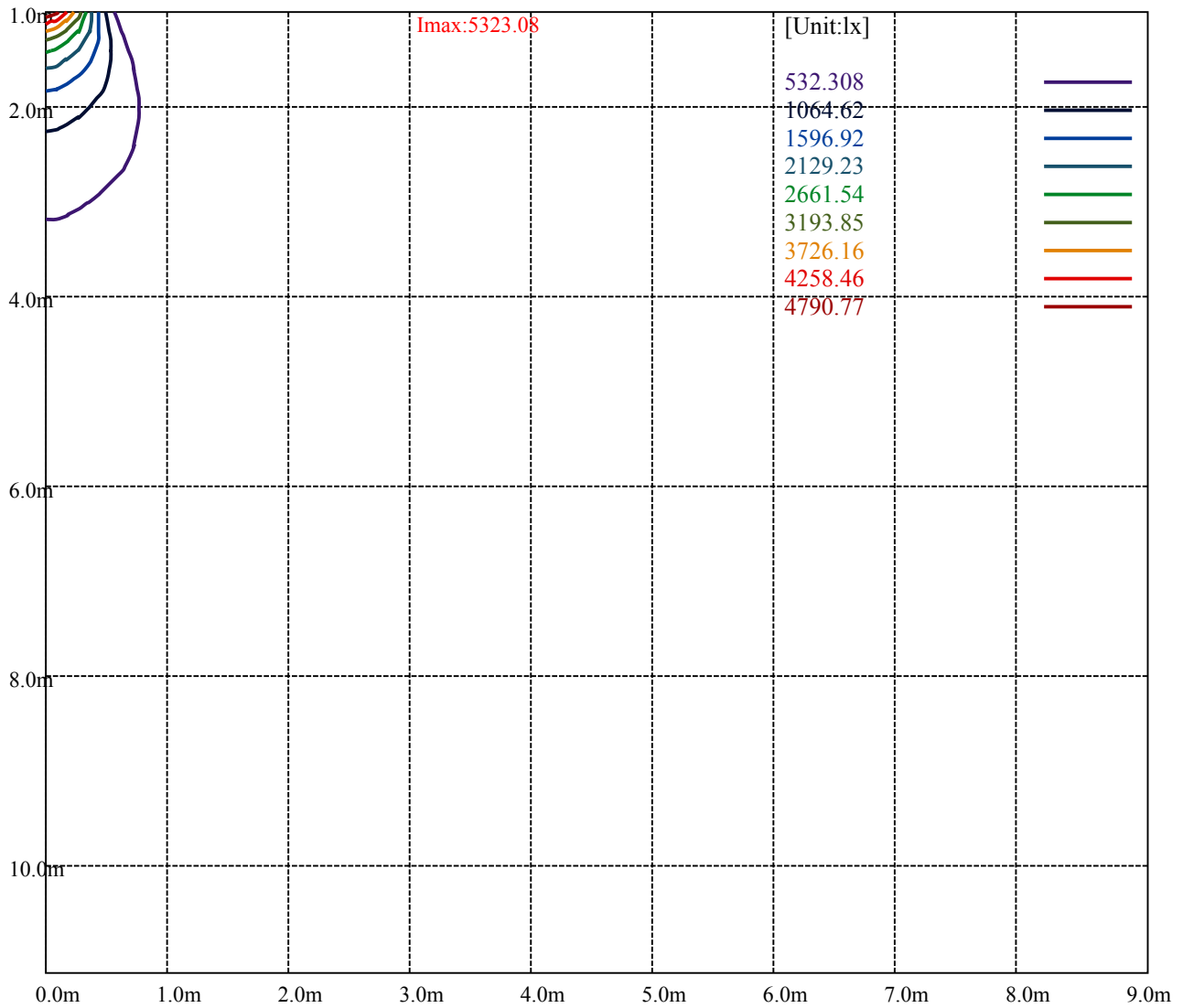
Road

Imax:5323.08

(10%Imax)	532.308	—
(20%Imax)	1064.62	—
(30%Imax)	1596.92	—
(40%Imax)	2129.23	—
(50%Imax)	2661.54	—
(60%Imax)	3193.85	—
(70%Imax)	3726.16	—
(80%Imax)	4258.46	—
(90%Imax)	4790.77	—



- (10%Emax) 133.077
- (20%Emax) 266.155
- (30%Emax) 399.23
- (40%Emax) 532.3075
- (50%Emax) 665.385
- (60%Emax) 798.4625
- (70%Emax) 931.5375
- (80%Emax) 1064.615
- (90%Emax) 1197.693



Luminance Table

γ	45	50	55	60	65	70	75	80	85
C0	0	0	0	0	0	0	0	0	0
C45	0	0	0	0	0	0	0	0	0
C90	0	0	0	0	0	0	0	0	0

L(Hor)(65)	L(Ver)(65)	L45(65)	L(Hor)(75)	L(Ver)(75)	L45(75)	L(Hor)(85)	L(Ver)(85)	L45(85)
0	0	0	0	0	0	0	0	0

Glare Table

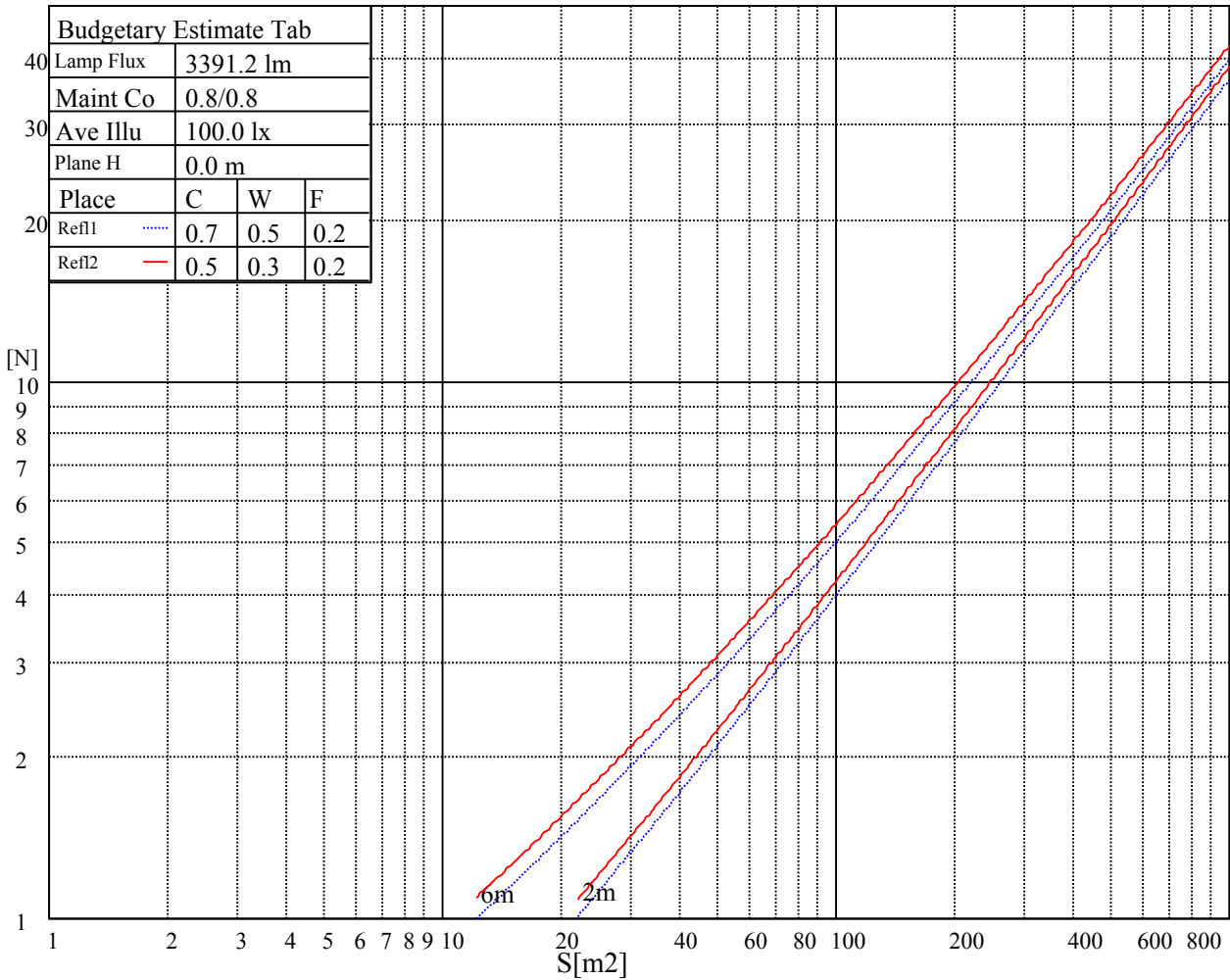
Glare	Quality	Service Values Illuminance(lx)							
1.15	A	2000	1000	500	<=300				
1.5	B		2000	1000	500	<=300			
1.85	C			2000	1000	500	<=300		
2.2	D				2000	1000	500	<=300	
2.55	E					2000	1000	500	<=300
		a	b	c	d	e	f	g	h

Luminance Limiting Curve

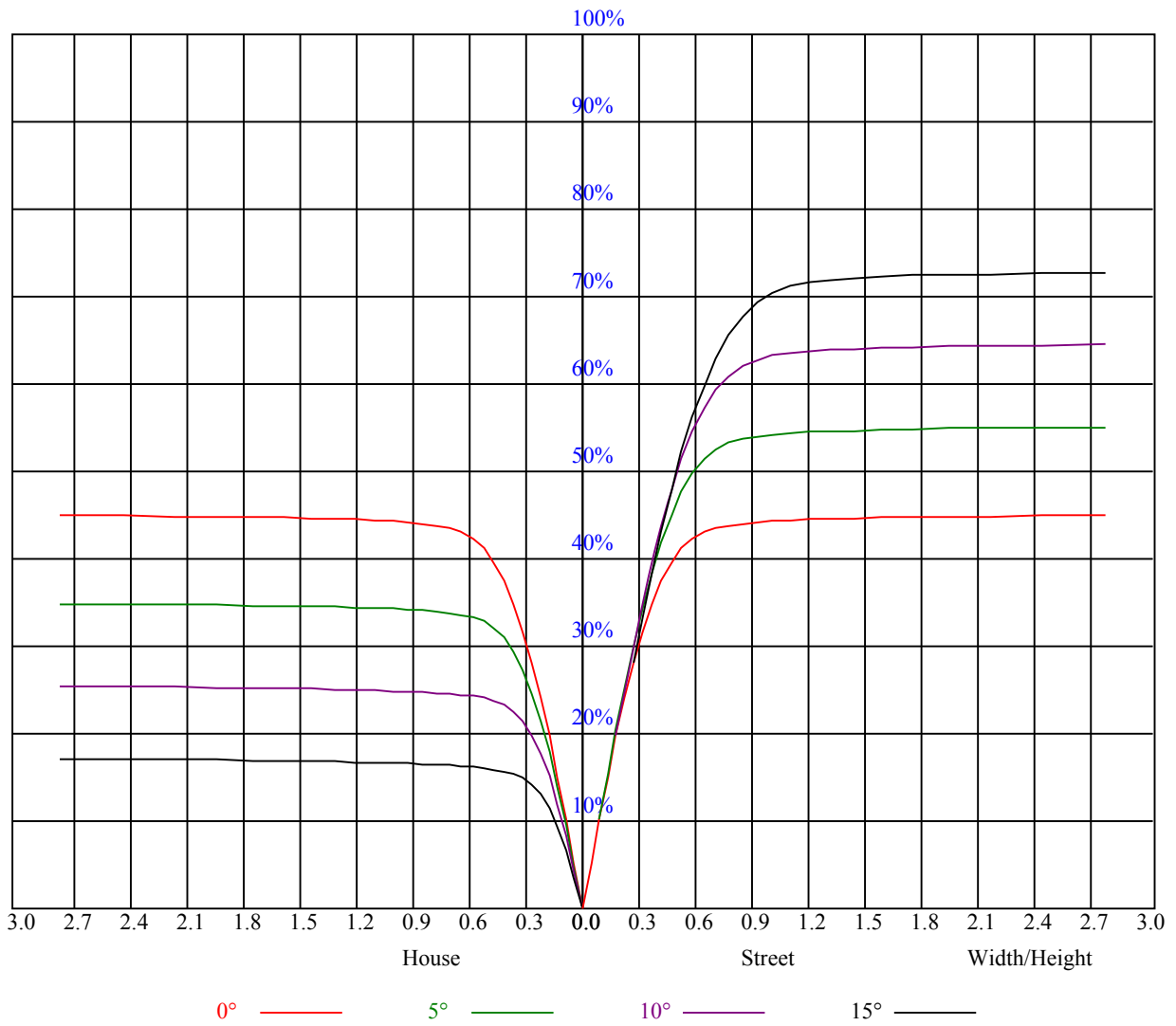


Illumination assessment according UGR										
Rf of Ceiling	70	70	50	50	30	70	70	50	50	30
Rf of Wall	50	30	50	30	30	50	30	50	30	30
Rf of Floor	20	20	20	20	20	20	20	20	20	20
Room dimensions	Viewed crosswise					Viewed endwise				
X	Y									
2H	2H	非数字	非数字	非数字	非数字	非数字	非数字	非数字	非数字	非数字
	3H	非数字	非数字	非数字	非数字	非数字	非数字	非数字	非数字	非数字
	4H	非数字	非数字	非数字	非数字	非数字	非数字	非数字	非数字	非数字
	6H	非数字	非数字	非数字	非数字	非数字	非数字	非数字	非数字	非数字
	8H	非数字	非数字	非数字	非数字	非数字	非数字	非数字	非数字	非数字
	12H	非数字	非数字	非数字	非数字	非数字	非数字	非数字	非数字	非数字
4H	2H	非数字	非数字	非数字	非数字	非数字	非数字	非数字	非数字	非数字
	3H	非数字	非数字	非数字	非数字	非数字	非数字	非数字	非数字	非数字
	4H	非数字	非数字	非数字	非数字	非数字	非数字	非数字	非数字	非数字
	6H	非数字	非数字	非数字	非数字	非数字	非数字	非数字	非数字	非数字
	8H	非数字	非数字	非数字	非数字	非数字	非数字	非数字	非数字	非数字
	12H	非数字	非数字	非数字	非数字	非数字	非数字	非数字	非数字	非数字
8H	4H	非数字	非数字	非数字	非数字	非数字	非数字	非数字	非数字	非数字
	6H	非数字	非数字	非数字	非数字	非数字	非数字	非数字	非数字	非数字
	8H	非数字	非数字	非数字	非数字	非数字	非数字	非数字	非数字	非数字
	12H	非数字	非数字	非数字	非数字	非数字	非数字	非数字	非数字	非数字
12H	4H	非数字	非数字	非数字	非数字	非数字	非数字	非数字	非数字	非数字
	6H	非数字	非数字	非数字	非数字	非数字	非数字	非数字	非数字	非数字
	8H	非数字	非数字	非数字	非数字	非数字	非数字	非数字	非数字	非数字
Variation with the observer position at spacings:										
S = 1.0H	非数字/非数字					非数字/非数字				
S = 1.5H	非数字/非数字					非数字/非数字				
S = 2.0H	非数字/非数字					非数字/非数字				
Standard tables:	BK0					BK0				
Uncorrected UGR	负无穷大					负无穷大				

UGR calculation is based on CIE Publ. 117 ,S/H = 0.25



RHOCC	80			70			50			30			10			0
RHOW	50	30	10	50	30	10	50	30	10	50	30	10	50	30	10	0
RCR	COEFFICIENTS OF UTILIZATION RHOF=20 CU															
0	1.08	1.08	1.08	1.05	1.05	1.05	1.01	1.01	1.01	0.96	0.96	0.96	0.93	0.93	0.93	0.91
1	1.01	0.99	0.97	0.99	0.97	0.95	0.95	0.94	0.92	0.92	0.90	0.89	0.89	0.88	0.87	0.85
2	0.94	0.91	0.88	0.93	0.90	0.87	0.90	0.87	0.85	0.87	0.85	0.83	0.85	0.83	0.82	0.80
3	0.89	0.85	0.81	0.88	0.84	0.81	0.85	0.82	0.79	0.83	0.80	0.78	0.81	0.79	0.77	0.76
4	0.84	0.79	0.76	0.83	0.79	0.75	0.81	0.77	0.74	0.79	0.76	0.74	0.78	0.75	0.73	0.71
5	0.79	0.75	0.71	0.79	0.74	0.71	0.77	0.73	0.70	0.75	0.72	0.69	0.74	0.71	0.69	0.68
6	0.75	0.70	0.67	0.75	0.70	0.67	0.73	0.69	0.66	0.72	0.68	0.66	0.71	0.68	0.65	0.64
7	0.72	0.67	0.63	0.71	0.66	0.63	0.70	0.66	0.63	0.69	0.65	0.62	0.68	0.65	0.62	0.61
8	0.68	0.63	0.60	0.68	0.63	0.60	0.67	0.63	0.60	0.66	0.62	0.59	0.65	0.62	0.59	0.58
9	0.65	0.60	0.57	0.65	0.60	0.57	0.64	0.60	0.57	0.63	0.59	0.57	0.62	0.59	0.56	0.55
10	0.62	0.57	0.54	0.62	0.57	0.54	0.61	0.57	0.54	0.60	0.57	0.54	0.60	0.56	0.54	0.53



Intensity data(cd)

C/γ(°)	0.0	1.0	2.0	3.0	4.0	5.0	6.0	7.0	8.0
0.0	5310.07	5275.20	5225.38	5148.99	5079.80	4973.52	4891.60	4802.48	4715.02
45.0	5341.62	5306.20	5277.41	5226.49	5146.78	5063.19	4972.97	4882.19	4782.55
90.0	5299.55	5276.31	5210.43	5124.64	5049.36	4949.72	4846.76	4760.96	4670.74
135.0	5341.07	5309.52	5280.18	5239.77	5154.53	5073.71	4979.61	4866.69	4783.66
180.0	5310.07	5338.85	5328.34	5284.61	5259.70	5180.54	5104.16	5036.07	4918.72
225.0	5341.62	5329.44	5274.09	5251.40	5194.38	5119.65	5028.32	4930.90	4843.44
270.0	5299.55	5337.75	5338.30	5281.84	5260.81	5194.38	5117.99	5043.27	4958.58
315.0	5341.07	5322.25	5276.86	5245.31	5187.74	5095.85	5018.91	4936.43	4851.19
360.0	5310.07	5275.20	5225.38	5148.99	5079.80	4973.52	4891.60	4802.48	4715.02
C/γ(°)	9.0	10.0	11.0	12.0	13.0	14.0	15.0	16.0	17.0
0.0	4622.58	4514.09	4422.20	4322.01	4184.73	4061.29	3932.32	3801.13	3618.46
45.0	4699.52	4605.97	4512.43	4392.31	4297.65	4185.84	4069.60	3927.89	3801.69
90.0	4574.98	4442.13	4347.47	4244.51	4132.70	3982.69	3861.47	3708.14	3565.33
135.0	4700.63	4580.51	4485.30	4361.86	4248.39	4131.04	4007.60	3842.09	3704.82
180.0	4844.55	4742.70	4640.29	4543.42	4422.75	4318.69	4220.71	4110.56	3960.00
225.0	4744.91	4658.01	4567.78	4457.63	4363.52	4263.33	4138.24	4022.55	3905.20
270.0	4868.90	4795.84	4694.54	4599.33	4510.21	4393.97	4295.99	4182.52	4030.30
315.0	4770.37	4664.65	4577.19	4484.20	4385.11	4254.48	4126.61	3991.55	3845.97
360.0	4622.58	4514.09	4422.20	4322.01	4184.73	4061.29	3932.32	3801.13	3618.46
C/γ(°)	18.0	19.0	20.0	21.0	22.0	23.0	24.0	25.0	26.0
0.0	3457.94	3288.56	3114.19	2884.48	2687.42	2479.29	2219.13	2014.87	1755.82
45.0	3657.21	3465.69	3301.29	3125.82	2903.30	2718.42	2471.54	2266.73	2055.28
90.0	3420.85	3226.01	3063.27	2881.15	2692.40	2442.20	2239.61	2034.80	1822.24
135.0	3558.68	3402.03	3197.78	3035.59	2870.64	2696.27	2449.95	2246.80	1986.64
180.0	3831.02	3682.68	3521.60	3312.91	3142.42	2971.38	2740.00	2550.14	2300.50
225.0	3766.81	3580.82	3428.05	3260.33	3082.09	2855.14	2669.70	2474.31	2226.88
270.0	3880.29	3722.53	3523.26	3352.21	3168.99	2989.09	2765.47	2581.14	2383.53
315.0	3643.37	3484.51	3309.04	3087.07	2909.94	2721.74	2475.41	2272.27	2071.89
360.0	3457.94	3288.56	3114.19	2884.48	2687.42	2479.29	2219.13	2014.87	1755.82
C/γ(°)	27.0	28.0	29.0	30.0	31.0	32.0	33.0	34.0	35.0
0.0	1546.58	1102.64	1102.64	930.77	776.61	641.88	526.03	406.90	328.58
45.0	1829.99	1559.31	1344.54	1142.50	958.72	759.45	624.39	511.47	395.22
90.0	1555.99	1064.67	1064.67	975.61	774.62	637.56	521.82	402.31	323.93
135.0	1770.21	1559.31	1309.11	1124.23	952.08	798.20	630.48	519.77	424.01
180.0	2092.92	1889.22	1678.87	1416.50	1211.14	1019.61	850.78	673.10	554.09
225.0	2020.96	1753.60	1536.62	1059.74	1059.74	876.19	721.20	590.07	455.89
270.0	2182.04	1918.56	1704.89	1498.98	1246.56	1050.06	834.18	688.05	562.95
315.0	1821.13	1622.41	1085.54	1085.54	998.36	838.05	696.40	573.96	445.98
360.0	1546.58	1102.64	1102.64	930.77	776.61	641.88	526.03	406.90	328.58
C/γ(°)	36.0	37.0	38.0	39.0	40.0	41.0	42.0	43.0	44.0
0.0	264.15	213.06	163.46	134.84	113.36	94.27	83.14	74.40	65.70
45.0	319.94	288.39	288.39	161.02	133.40	107.72	92.99	82.09	73.68
90.0	259.39	196.45	158.81	130.25	104.29	89.45	78.38	70.02	61.83
135.0	343.19	290.61	290.61	162.35	132.68	106.22	90.95	77.38	69.41
180.0	452.79	368.65	281.75	281.75	215.99	139.05	115.14	94.27	82.37
225.0	367.05	294.87	236.14	190.53	148.35	123.00	104.12	86.91	76.94
270.0	459.99	352.60	284.52	284.52	217.48	138.72	114.42	96.76	83.75
315.0	360.63	289.94	231.82	174.97	141.10	110.82	94.10	82.03	71.30
360.0	264.15	213.06	163.46	134.84	113.36	94.27	83.14	74.40	65.70

Intensity data(cd)

C/γ(°)	45.0	46.0	47.0	48.0	49.0	50.0	51.0	52.0	53.0
0.0	60.06	55.35	50.43	47.11	44.34	41.85	39.36	37.47	35.92
45.0	65.37	59.89	55.30	51.31	47.27	44.39	42.01	39.85	37.59
90.0	56.63	52.20	48.49	44.67	42.12	39.36	37.47	35.87	34.04
135.0	63.10	56.68	52.36	48.60	45.45	42.01	39.74	37.86	36.15
180.0	73.45	64.82	59.34	54.80	50.93	46.77	44.01	41.46	39.25
225.0	67.64	61.61	56.85	51.92	48.55	45.56	42.95	40.13	38.14
270.0	72.35	65.37	59.73	53.97	50.04	46.00	43.23	40.80	38.14
315.0	64.65	59.17	53.69	49.87	46.66	43.90	40.80	38.75	36.92
360.0	60.06	55.35	50.43	47.11	44.34	41.85	39.36	37.47	35.92
C/γ(°)	54.0	55.0	56.0	57.0	58.0	59.0	60.0	61.0	62.0
0.0	34.49	32.88	31.72	30.44	29.50	28.67	27.73	26.96	26.35
45.0	35.87	34.04	32.82	31.72	30.39	29.39	28.51	27.68	26.68
90.0	32.77	31.55	30.28	29.34	28.45	27.68	26.74	26.07	25.46
135.0	34.21	32.99	31.83	30.56	29.56	28.67	27.68	26.90	26.13
180.0	37.47	35.48	34.04	32.44	31.39	30.17	29.28	28.45	27.68
225.0	36.42	34.87	33.16	31.94	30.89	29.67	28.73	27.95	27.01
270.0	36.37	34.76	33.38	31.88	30.83	29.89	29.01	27.95	27.29
315.0	35.32	33.49	32.27	31.16	29.95	29.06	28.06	27.40	26.68
360.0	34.49	32.88	31.72	30.44	29.50	28.67	27.73	26.96	26.35
C/γ(°)	63.0	64.0	65.0	66.0	67.0	68.0	69.0	70.0	71.0
0.0	25.52	24.91	24.36	23.80	23.03	22.53	21.98	21.42	20.81
45.0	26.07	25.41	24.80	24.08	23.53	22.97	22.25	21.81	21.26
90.0	24.85	24.19	23.64	23.08	22.47	21.98	21.31	20.81	20.31
135.0	25.52	24.91	24.36	23.69	23.14	22.58	22.09	21.48	20.98
180.0	26.85	26.13	25.52	24.91	24.19	23.64	23.08	22.58	21.98
225.0	26.29	25.63	24.85	24.30	23.75	23.19	22.58	22.09	21.53
270.0	26.57	25.79	25.19	24.58	23.91	23.36	22.86	22.25	21.75
315.0	26.07	25.24	24.69	24.13	23.58	22.92	22.42	21.92	21.26
360.0	25.52	24.91	24.36	23.80	23.03	22.53	21.98	21.42	20.81
C/γ(°)	72.0	73.0	74.0	75.0	76.0	77.0	78.0	79.0	80.0
0.0	20.31	19.71	19.21	18.71	18.10	17.60	17.10	16.66	16.11
45.0	20.59	20.09	19.43	18.93	18.49	17.99	17.38	16.94	16.44
90.0	19.82	19.26	18.82	18.27	17.82	17.21	16.77	16.33	15.78
135.0	20.48	19.87	19.43	18.93	18.38	17.88	17.44	16.88	16.44
180.0	21.48	20.98	20.31	19.87	19.26	18.76	18.27	17.66	17.16
225.0	20.98	20.37	19.87	19.37	18.71	18.21	17.66	17.16	16.72
270.0	21.26	20.76	20.20	19.71	19.21	18.71	18.16	17.60	16.99
315.0	20.76	20.31	19.71	19.21	18.76	18.16	17.66	17.16	16.61
360.0	20.31	19.71	19.21	18.71	18.10	17.60	17.10	16.66	16.11
C/γ(°)	81.0	82.0	83.0	84.0	85.0	86.0	87.0	88.0	89.0
0.0	15.72	15.22	14.89	14.45	14.17	13.73	13.40	13.01	13.06
45.0	16.05	15.50	15.06	14.61	14.23	13.84	13.56	13.12	12.95
90.0	15.39	14.95	14.56	14.28	13.89	13.62	13.34	12.95	12.95
135.0	16.00	15.50	15.06	14.72	14.28	13.89	13.62	13.28	12.90
180.0	16.72	16.22	15.78	15.33	14.89	14.39	14.00	13.67	13.34
225.0	16.16	15.78	15.33	14.89	14.45	14.12	13.84	13.45	13.12
270.0	16.61	16.16	15.61	15.17	14.78	14.39	13.95	13.67	13.34
315.0	16.16	15.67	15.28	14.83	14.45	14.12	13.73	13.45	13.06
360.0	15.72	15.22	14.89	14.45	14.17	13.73	13.40	13.01	13.06

Intensity data(cd)

C/ γ (°)	90.0
0.0	13.01
45.0	12.95
90.0	12.95
135.0	12.95
180.0	13.01
225.0	12.90
270.0	13.01
315.0	12.95
360.0	13.01